

Human FGL1 Protein

Cat. No. FGL-HM211



Description

Source	Recombinant Human FGL1 Protein is expressed from HEK293 with hFc tag at the N-Terminus. It contains Asp64-Asn305.
Accession	Q08830
Molecular Weight	The protein has a predicted MW of 54.8 kDa. Due to glycosylation, the protein migrates to 60-66 kDa based on Bis-Tris PAGE result.
Endotoxin	Less than 1EU per µg by the LAL method.
Purity	> 95% as determined by Bis-Tris PAGE > 90% as determined by HPLC

Formulation and Storage

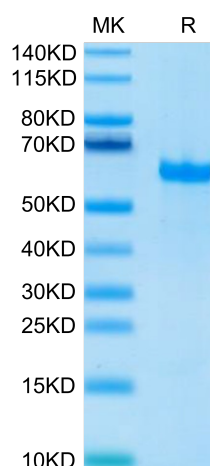
Formulation	Supplied as 0.22µm filtered solution in 20mM PB, 250mM NaCl (pH 7.4).
Storage	Valid for 12 months from date of receipt when stored at -80°C. Recommend to aliquot the protein into smaller quantities for optimal storage. Please minimize freeze-thaw cycles.

Background

Fibrinogen-like protein 1 (FGL-1) is a protein that is structurally related to fibrinogen. In humans, FLG-1 is encoded by the FGL1 gene. Fibrinogen-like protein 1 is a member of the fibrinogen family of proteins, which also includes fibrinogen, fibrinogen-like protein 2, and clotting factors V, VIII, and XIII. Fibrinogen-like Protein 1 is a major immune inhibitory ligand of LAG-3.

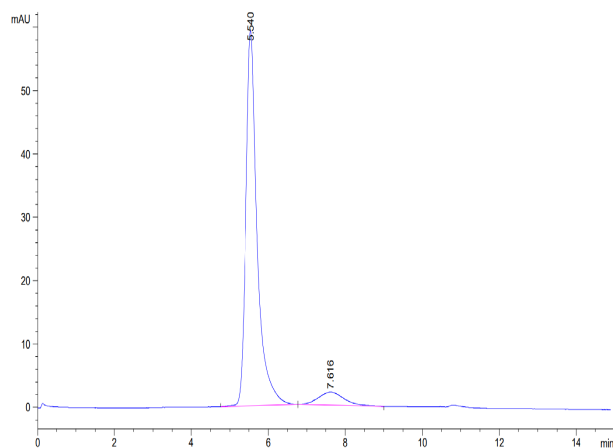
Assay Data

Bis-Tris PAGE



Human FGL1 on Bis-Tris PAGE under reduced condition. The purity is greater than 95%.

SEC-HPLC



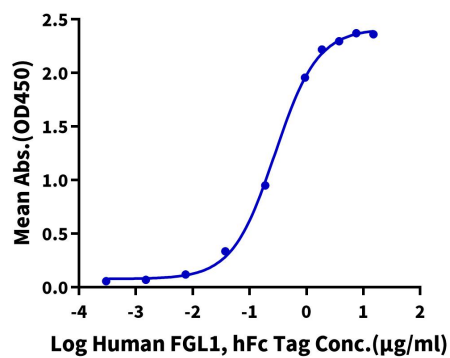
The purity of Human LTBR is greater than 90% as determined by SEC-HPLC.

Assay Data

ELISA Data

Human FGL1, hFc Tag ELISA

0.5µg Human LAG3, His Tag Per Well



Immobilized Human LAG3, His Tag at 5µg/ml (100µl/Well) on the plate. Dose response curve for Human FGL1, hFc Tag with the EC50 of 0.28µg/ml determined by ELISA.